

Special points of interest:

- SR-269 Quincy Bypass' Ground-breaking Ceremony
- Ocean Avenue Bridge on schedule
- SR-30 Bridge over the mid-mark
- GLF opens new Paving Division in Orlando
- New project in Haiti
- Years of Service with GLF



Inside this issue:

Current Project News	1-6
New Projects	7
Personal Events	7
Team Events / Personal	8-8
Where to send news	8-8

SR-269 Groundbreaking Ceremony in Quincy, FL

GLF Construction Corporation was awarded the SR-269 Quincy Bypass project on July 25, 2012 by the Florida Department of Transportation, District 3 in the amount of \$13,348,457.60. The project consists of a new 1.6 mile roadway that will intersect US 90 just west of the Gadsden Regional Medical Center at Ralph Strong Road. This new intersection will be signalized. The road will connect with SR-12 near the Quincy Municipal Airport. The facility will be a two-lane, undivided roadway for the entire length. The travel lanes are 12' wide and there will be ten foot shoulders, five of which will be paved. There is one 1,241 foot long bridge being constructed, which will span Quincy Creek.



Tommy Barfield, FDOT 3 District Secretary

The project is expected to be completed by the summer of 2014.

On October 25, 2012 the Ground-breaking Ceremony took place and was hosted by the Gadsden County Chamber of Commerce. The agenda developed with a welcome by David Gardner, Executive Director of the Chamber and speeches by City of Quincy Mayor, Angela Sapp; Gadsden Board of County Commissioners, Commission Chair Sherrie Taylor; Capital Regional Planning Transportation Agency Gadsden County Commissioner, Douglas Croley; and Florida Department of Transportation District Secretary, Tommy Barfield.



Current Project News (Cont'd) SR-269 Groundbreaking Ceremony in Quincy, FL

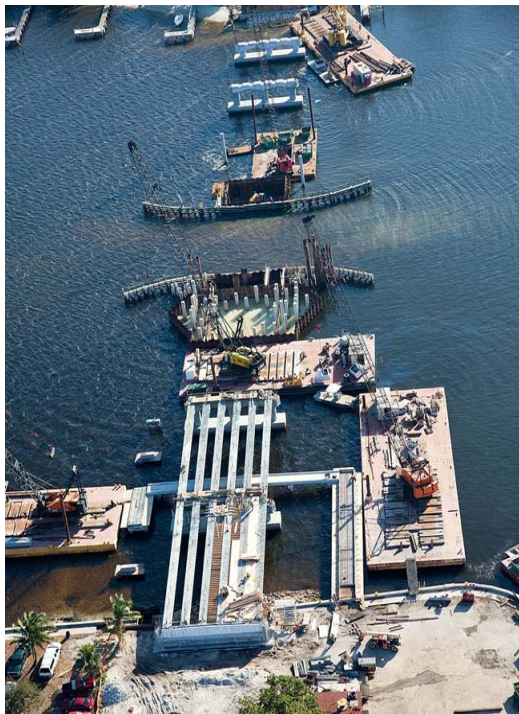
GLF has submitted a Cost Saving Initiative Proposal (CSIP) to the Florida Department of Transportation to perform 30" concrete piles in lieu of 48" Drill Shafts. The cost saving will be +/- \$400,000.00.

GLF Construction Corporation personnel for this project consists of Tim Cook (Project Superintendent), Sandra Howard (Office Manager) and Mike Sturgeon (Project Engineer). Professional Services Industries, Inc. (PSI) was contracted to perform the Quality Control for this project.



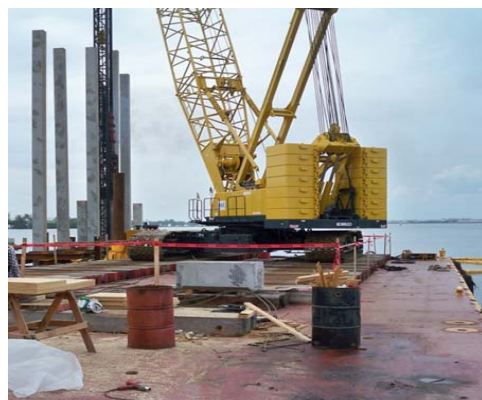
Ocean Avenue Bridge (Lantana) is on schedule

Circa Mid-November 2012 – Under the leadership of GLF’s veteran Project Manager Andres “Andy” Sosa, field work commenced March 2012 on this \$30M project and is on schedule for an on-time completion in November 2013 for Palm Beach County. This predominantly marine based operation involves the removal of the existing bascule bridge and construction of a new, aesthetically enhanced, double leaf bascule bridge with approaches along the same alignment. The new bridge consists of a 245’ bascule span and piers flanked on each side by 270’, 3-span concrete girder units for a total bridge length of 745’. Also included is a two finger, transversely connected fishing pier/pedestrian underpass, parallel to and beneath the east approach. The new bridge



spans the Atlantic Intracoastal Waterway connecting the mainland Town of Lantana with the adjacent barrier island and the communities of Manalapan, South Palm Beach and Hypoluxo. Overall, work on the project is 50% com-

plete with fabrication of the structural steel and machinery well advanced. Work momentum is accelerating as much of the foundation work and associated obstacles have been overcome.



Andres the Giant

Approach span waterline footings and piers are complete, superstructure girder erection and forming commenced with deck placement scheduled to begin in late November. The west bascule

pier seal (675 yd³) is in place, cofferdam dewatered, and the 700 yd³ footing placement scheduled for early December. Demolition at the east bascule pier is 90% complete with preparation for driving of 24-inch piles underway. Erection of the bascule structural steel and machinery is scheduled to commence late in Q1 of 2013. GLF’s marine equipment spread of three barge mounted cranes is headed by GLF’s heavy lift muscle, “Andres the Giant” Kobelco CK2500, and is “pushed around” by the petite “Miss Thelma”.



I-595 Corridor Improvements—Bridges entering the last phase

This project is a Public Private Partnership between ACS, Dragados-USA, Inc. and the FDOT to design, build and construct reversible toll lanes on I-595 in Ft. Lauderdale, Florida. The project is the largest ever let in the State of Florida and the design and construction cost of the project is approximately \$1.2 billion. This includes the widening of approximately 10 miles of limited access highway and has over 60 new and widened bridges. The project extends from the I-75 / Sawgrass Expressway interchange to the I-595 / I-95 interchange in Central Broward County.

GLF is under contract to construct 17 various types of bridges and demolish 1 bridge. The work is made up of 14 new bridges and 3 widenings. The bridge foundations include prestress piling with concrete footings and columns. The superstructure combines steel plate girders, trapezoidal tubs and AASHTO beams with concrete decks. Construction started in early 2010 and has an anticipated completion date in late 2013.



Bridge 31

A major milestone GLF achieved was completing Pier 8L on bridge 31 on the I-595 median before December 21, 2012. GLF had two crews working around the clock in order to meet this deadline. The challenge was that the location of the pier had a direct impact on the traffic pattern on the project. Completing this was very important because it would allow Dragados-USA, Inc. to open three permanent lanes on the eastbound side of I-595 to allow commuters to take the Florida Turnpike ramps, the 441 ramps or continue on I-595 eastbound.

GLF has had an ongoing effort to maintain a high level of safety for the people involved in the construction as well as for the community. From the safety gear that is constantly being distributed to the workforce, to the M.O.T. teams making sure the roads are properly arranged to insure drivers a safe and comfortable commute.

GLF CSI Team recovers stolen Semi-Truck and Trailer. On October 20, 2023, our truck driver reported to work and discovered the semi and trailer missing. The phone rang during our daily morning meeting when we were notified of the theft. Immediately, our GLF CSI Team went into action. We put a tracer on the last known toll paid to find out which direction the thieves would have gone. Once we knew that they were headed south of the jobsite, The CSI team got together and came up with a plan.



Lisa Halvosa, I-595 CSI Team Spokesperson

Thanks to the fast thinking and work of Jesus Asqueri and

Keith Sheaks, they got the necessary permission to hire a helicopter service to survey certain areas in the hopes of locating our stolen equipment. Within an hours, the semi was found and reported to the police, but no sight of the trailer.



A few days later, our chief detective, Jesus, was tasked with purchasing a replacement trailer and

sighted the stolen one in a trailer lot. The case never had time to get "cold".



I-595 Management team: Top row L-R: M. Wainstein, J. Schmit, J. Asqueri. Seated from L-R: C. McCleaf, D. Cole, R. Hernandez, J. Bryant, (PM B. Wilson not present)

SR-30 (US98) Over Aucilla River Bridge Replacement in Taylor County

The Aucilla River Bridge Replacement Project in Taylor County consists of team members: Ernie Howard (Vice President of Operations), Curtis Johnson (Project Manager), Tom Fritz (General Superintendent), Lorenzo Ellis (Project Engineer/QC), Wayne Warren (Superintendent), Adam Conrad (Intern Field Engineer), (Teresa Thomas (Office Manager), Evelyn Belk (Office/Personnel), and Jack Davis (Foreman).

The construction of the Aucilla River Bridge Replacement is 52% complete. We are currently in Phase II of the project. During the third quarter of FY 2012, we have opened up traffic onto the temporary detour bridge and have begun partial demolition of the existing bridge. The drill shaft installation started on October 15th, 2012. We are looking forward to start the substructure as soon as the drill shafts progress.

On another note, GLF worked with FDOT to create the welding trainee classification by developing the core training modules and evaluation criteria. When required to train two employees, GLF project personnel were adamant that we wanted to train in a classification that made a difference for GLF and the trainee. Rose Bishop was instrumental in this process and FDOT has now added the classification statewide. Yvonne Warren has completed the (Welding OJT Training Program) in which she trained and passed the welding test.



We have also entered into a Contract with North Florida Workforce to train three employees through the Employed Worker Training Program (EWT Program). This program allows our job site to train three employees in the bridge construction field. These employees are: Adam Conrad, Intern Field Engineer, Roger Reid, Bridge Carpenter, and Jason Thomas, Bridge Carpenter. Adam Conrad has just completed his training program and Roger Reid and Jason Thomas are scheduled to com-

plete their training programs by the end of January 2013.

On a sad note, JR's 300 lb gentle boar hog (Jeff) of 13 years has passed away. He was a focal point and object of many questions to visitors of the store, as he often wandered the property. His presence will be missed.



New Port at Galeota, Trinidad

Construction finally began in earnest on this project at the start of this year. The project is a Multi-User Energy Port for the National Energy Corporation of Trinidad & Tobago. Port Galeota when completed will consist of four sheet piled berths to accommodate vessels that service Trinidad's off-shore petrochemical assets, providing over 1600 feet of berth space. The facility will be ideally located for use in staging the support services for developing oil discoveries in northern South America which will be sourced from Trinidad. The USD 80M project includes dredging of the approach channel to provide a deeper draft for the vessels with the dredge fill being pumped ashore to reclaim approximately 5 acres for use as a lay down yard, more than doubling the existing backland yard space. Our joint venture partner Jan de Nul out of Belgium, completed the dredging works just two weeks ago and their project manager Koen Robijns is now breathing a sigh of relief given the rough seas and storm activity prevalent in the area.



Our team has overcome several obstacles ranging from weather, labor, equipment, logistics, demolition and several design issues on this project. While new construction takes place, Berth 1 has to remain operational for several vessels supporting the offshore activity. Numerous design issues and changes have kept our senior project engineer, Jose Gonzales, extremely busy as the turnaround for RFI's is longer than normal. Equipment breakdowns have also affected us as the logistics involved in sourcing parts, shipping and customs clearance can take several days. Our thanks go out to Steven "Mate" Hughes and Sterlyn Ali whose skill and diligence in keeping our crane, which was purchased from the History Channel's American Pickers and will be donated to the Trinidad Artificial Reef Project on completion of the project, operational. Tie wire and duct tape only works for a short time.

Our Site Manager, Sedley Agostini and Construction Manager, George MacKay are doing a great job in keeping the project focused in the right direction while dealing with several local labor and expat issues and are up for Parenting Maga-



zines "Babysitter of the Year Award".

Safety on the project is being addressed by everyone along with local provider Inter-Emergency on site and so far we've had only two recordable incidents, those being minor bumps and bruises but nonetheless effectively treated by the local witch doctor with chicken bones and ceremonial "sage". On a sad note one of our local workers Shawn Douglas succumbed to heart failure while on the bus leaving the job site last month. Your thoughts and prayers for his family will be welcomed and his family wanted us to convey their gratitude to GLF for their kind assistance under these trying and sad circumstances. He is survived by his wife and five kids.

Our partner, Jan de Nul, has completed their dredging operations and is in the demobilization mode. Our thanks go out to them as well for making a sandy, wet, and puddle filled mess on the site while using up every inch of real estate! Unfortunately, they didn't find Jimmy Hoffa, no treasure chests or fragments of the asteroid that wiped out the dinosaurs. Just a bunch of old tires, a few refrigerators and a crane boom. Needless to say we are anxious to begin the final stages of sheet piling for berths 2, 3, 4 and 5. The final stages of this project will go much easier and faster as they will be completed from a working barge which should expedite our schedule. Thanks to the acute negotiating skills of Keith Haven, one of the last surviving members of the original Pirates of the Caribbean we have procured the Black Pearl working barge. It took some effort involving chicken bones, several bottles of Punccheon (local rum), dancing girls and a 24 hour marathon game of Indian Poker while on a three day trip to Martinique. This



should arrive the first week of January and be operational soon after. Now all he has to do is shanghai a captain for the support vessels.

GLF opens new Paving Division in Orlando

In January of 2012, GLF formed a roadway division to add to the current bridge and marine divisions and to enhance its organization. Mr. Curt Johnson was selected to head up the division. Curt brought on board Jeff Mairs, senior level estimator, and together they bring over 30 years of roadway market experience to the division.



Curt Johnson

This expansion of the capabilities of the company adds a new dimension of being able to bid complete jobs within the company and not have to rely on outside roadway subcontractors. In the past, on large bridge projects, we had to rely on roadway subs for competitive bids. We felt that we have lost jobs because of high roadway bids. To date, we have been able to win one job in Quincy, Florida and/or pursuing others.



Newly acquired Gomaco Paver

The Roadway Division personnel have extensive design build experience, and will be able to assist GLF to break into Design Build Market. Curt has been able to assist in forming teaming agreements for several projects, including: District 3 Walton Co. - US 331 Bridge over Choctawhatchee Bay; District 5 Orange Co. I-4 Ultimate I-4 build out; District 5 Volusia Co. - I-95 reconstruction; District 6

Miami – Dade Co. – I-75 reconstruction, and others.

In addition to diversifying into roadway market, GLF in July acquired Carlo Construction in Florida. With this acquisition GLF will be able to expand into concrete paving including the areas of runway and taxiway paving at airports. The personnel who came over from Carlo include: Chad W. Johnson (Paving Manager), Dave Ammon (Project Manager/ Estimator), Garrick Delony (Project Manager), Bill Capehart (Project Manager), and Barry Peters (Superintendent). Both the roadway and paving divisions are based in GLF's newly opened office in Orlando, Florida and we are happy to have them all onboard.

In Florida, GLF was awarded and began the Lakeland Linder Regional Airport Expansion Project, home of the world famous "Sun and Fun" Aviation Fly-In.

The project consists of the rehabilitation of a section of Taxiway F and transforms Taxiway B into a full-length parallel taxiway for Runway 5/23. The project will also incorporate a sizable storm drainage system upgrade, new runway and taxiway lighting systems, vehicular access roads and a modern primary windcone as part of the expansion.

To date the GLF team has received many compliments from the owner and their representatives for the tidy and efficient completion of work and our unique ability to construct work within active airports.



Lakeland Linder Airport

In Closing

The future looks bright for GLF as the US market picks up and we look to expand our know-how into the Caribbean and Central American.

With GLF's estimating team and the shrewd negotiating and diplomacy of President/CEO, Ing. Francesco Senis, we are poised to be awarded the reconstruction of the North Wharf in Port-au-Prince, Haiti, destroyed by the infamous earthquake of 2010.

GLF Headquarters

The future will bring some changes to the GLF headquarters. In 2012 GLF purchased property in downtown Miami along the Miami River for the purpose of construction a new office building. Fabio Silvestri and Lowell Burge are heading up the project to develop the property. The project is currently heavily into the permitting stage. The existing site is almost cleared of the old building and work is underway to mobilize GLF's own crews and equipment to start

construction of the new seawall. If all goes well sometime in early 2014 GLF will have some new digs to call home. Well that is if Fabio and Lowell can survive the permitting process and not end up on the wrong side of the law. Fabio at least the Miami jail is only a few blocks from the office. We'll consider it "working from home".

To all the GLF Team members

I want to thank each of you for your efforts and dedication in 2012. All of us are looking forward to 2013 and to continuing the GLF tradition as this will be GLF's 20th anniversary in the United States. We also need to recognize the continued support of the Shareholders in Italy at Grandi Lavori Fincosit SpA. I know they are anticipating big things from our Team here in the U.S. and the Caribbean.

Thanks again. - Francesco Senis, President & CEO

Personal Events

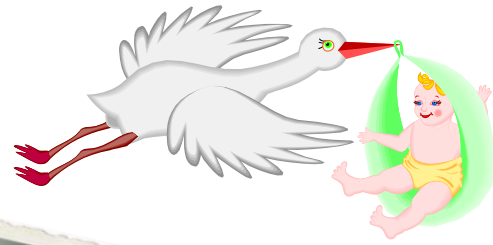
Birth Announcement

On December 8, 2012, Fisher Capehart was born at Winnie Palmer Hospital in Orlando, FL.

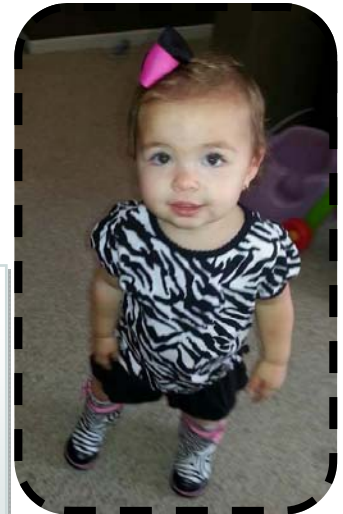
This beautiful baby boy is the son of our Paving Division Project Manager, William Capehart and his wife Darcy

Congratulations to both of you!

Fisher Capehart is our new Junior Team Member and we welcome him to the GLF Family.



GLF Cuties



*T*hese adorable cuties are:

MIA'BELLA FERNANDEZ (left), 2 years old, granddaughter of our beloved Ocean Ave. Bridge Project Manager, Andres "The Giant" Sosa.

VICTORIA ISABELLA HERNANDEZ (center), 6 months old, granddaughter of our Vice-President, Michael "Miguelito" Miles.

ADDISON MARIE PARRISH (right), 17 months old, daughter of our Ocean Ave. Bridge Office Manager, Melissa Prince.

Years of Service with GLF

We want to congratulate the following Team Members for years of continuous employment with GLF. They are:

15 Years:

March—Joseph M. Beard, Vice-President & Chief Operation Officer

5 Years:

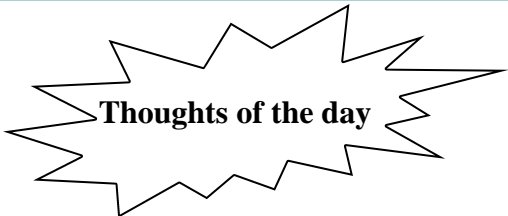
March—John Bryant, Project Engineer

April—Mark "Gorky" Wainstein, I-595 Construction Manager



GLF CONSTRUCTION CORPORATION

Brickell BayView Centre, Suite 2201
80 South West 8th Street, Miami, Florida 33130
Tel: (305) 371-5228 . Fax: (305) 371-9201
www.glfusa.com



You can observe a lot by just watching
- Yogi Berra

The best cure for insomnia is to get a lot of sleep
- W.C. Fields

And the winner of the "Name that Newsletter Contest" is...

LORENZO ELLIS

Thank you for your input, Lorenzo!
You won a \$150.00 Gift Certificate

We appreciate all entries received.

TO :

Team Events / Personal Where to send News

Birthdays

Happy Birthday to the following Team Members:



JANUARY:

Carlos Vargas, Richard Mosley, Misael Avila, Hubert Linton, Scott Schuler, Dorothy McMullen, Ephraim Jones, Mike Sturgeon

FEBRUARY:

Joseph M. Beard, George Russ, Rony Antenor, Keith Haven, John Kipp, Edgardo Rios-Liciaga, Steven Hughes, William Smith, Michael McCue, Joseph Bedward, Gilberto Liciaga, William Capehart, Yovanis Cruz, Lonnie Wright, Rodney Williams, Willie Bedford, Derrick McKeever, Wilfred Griffith

MARCH:

Mark Wainstein, George Mackay, Richard Alexander, William Parker, Magdaleno, Muñoz, Brian Vasquez, Ronald Olivas, Teresa Thomas, Brian Haven, Elijah Blackshear, Richard Ottey, Nathaniel Carty, Alfredo Lazo, David Ammon, Garrick Delony, Xavier Bailey

APRIL:

Thelma Garcia, Pattie Basanta, P. Wayne Warren, Rose Bishop, Jacob Sheaks, Mario Rivera, Anael Rodriguez, Melissa Prince, Nathan Buerk, Richard Harrison, Victor Constain, Barry Peters.

Send your stories to:

Thelma E. Garcia
Brickell BayView Centre, Suite 2201
80 South West 8th Street
Miami, Florida 33130
Tel: (305) 371-5228 – Fax: (305) 371-9201
E-Mail: tegarcia@glfusa.com

Editorial Staff

EDITOR & LAYOUT/PRODUCTION

Thelma E. Garcia

Special thanks to all team members who provided project information; it really is a team effort.